

St. Mary's  
EPISCOPAL CHURCH  
*Growing into Jesus - Reaching out with Love*

## Annual Meeting Packet

January 26, 2014

*The business of the Annual Meeting will be to present the Annual Reports from the Rector, the Vestry, the Treasurer, and the committees, commissions, and other groups of the Parish and to elect new members of the Vestry and further elect Vestry members for unexpired terms; and the transaction of such other business as may come before the meeting.*

*-Parish by-laws section 2.2*

### This packet contains

Meeting agenda

Minutes from 2013

The 2013 Annual Report

Welcoming our new members

Vestry candidate biographies

Tear-off election ballot

# Agenda for Annual Meeting

**i. Opening Prayer**

**ii. Determination of a Quorum**

*Forty (40) electors of the Parish shall constitute a quorum for the transaction of business at the Annual and Special Meetings of the Parish.*

*-Parish by-laws section 2.5*

**iii. Approval of the 2013 minutes**

*Thank you to clerk Trina Perna*

**iv. Welcome New Members**

*Kasia D'Auria*

**v. Results of the Spiritual Life Survey**

*Harriet Stone*

**vi. Election**

*Thank you to our exiting vestry members*

Tom Gilson Tim Kimes Anne Mack Susan Murphy Suzanne Pearson

*Thank you to our exiting delegates*

Tony George Jack Godfrey Charlie Lippincott

**vii. Reports**

*Rector's Warden*

*Treasurer*

*Rector*

**viii. Open Questions**

**ix. Closing Song**

*Praise God, from whom all blessings flow*

*Praise him, all creatures here below*

*Praise him above, ye heavenly host*

*Praise Father, Son, and Holy Ghost.*

*Amen.*

**x. Adjourn**

# Minutes from 2013 Annual Meeting

**i. Opening Prayer** - The 2013 Annual Parish Meeting was held in the Pittenger Center and called to order by Father Todd at 10:30 AM. Tim Kimes, Rector's Warden, offered an opening prayer.

**ii. Determination of a Quorum** - At 10:40 AM it was determined that a quorum was present and the meeting could proceed.

**iii. Approval of 2012 minutes** - A motion was made to approve the 2012 Annual Meeting minutes as written. The motion was seconded and passed unanimously. Pam Baker was thanked for her previous service as Clerk. Pam has accepted the position of Directress of the Altar Guild. Trina Perna, incoming Clerk, was introduced to the parish.

**iv. Welcome New Members** - Seventy-Eight (78) new members were welcomed for joining, or re-joining, the St. Mary's community in 2012.

Kasia D'Auria, People's Warden (role previously known as the Junior. Warden), and Father Koz introduced a new program, "Invite a Friend", to be implemented in 2013 to help build our congregation. A video presentation was given to provide the congregation with an example of how one might invite a neighbor to a service at St. Mary's. The new program will start Sunday, Feb. 3<sup>rd</sup>, and will be followed by 2-3 similar Sundays in 2013. It was noted that 40% of people who come to church do so the first time by being invited.

**v. Election** - Father thanked outgoing vestry members for their service. Members rotating off the vestry are Patty Downing, Bryan Garner, Ann Stocker, and Tom Winter. Thanks were also given for the service of exiting Diocesan delegates Jane Burton, Chuck Pierce and Mary Shaw.

**New Vestry:** Outgoing vestry member Tom Winter introduced the 2013 slate of nominees and asked for additional nominations from the floor. Hearing none, Tom moved that slate be closed. It was moved by common acclamation that slate for the new vestry be accepted as recorded. Motion passed unanimously. Joining the vestry in 2013 are members Ann Mack, Tom Morris, Peter Pignataro, and Harriet Stone.

**New Diocesan Delegates:** Tom Winter, Ann Stocker and Bryan Garner were proposed as St. Mary's new Diocesan nominees for 2013. Hearing no additional nominations from the floor, the nominations were closed and a motion was made for a vote by common acclamation to support this slate of nominees. Motion passed unanimously.

**vi. Speaking Presentations** given by St. Mary's Treasurer, Rector's Warden and the Rector.

## **Treasurer's Report, Ernie Peixotto:**

After thanking God for all St. Mary's wonderful assets - great campus, no mortgage, no debt, and cash assets of over \$800K - Ernie outlined our current financial status. In 2012 expenses exceeded \$1.09M while income was only \$1.02M, leaving a shortfall of \$74,228. This short fall will be funded from the Reserve Account. 2012 Also included some good news: Revenues for Mary's Kitchen and the T.R.U.E Fund exceeded expenses by a combined total of \$18,784, while the Heritage Fund (previously known as the Endowment Fund) gained \$26,725 from investment income.

For 2013, the Vestry has approved a bare bones budget of \$1,136,428. Pledges as of Jan. 18<sup>th</sup> cover only 58% of these expenses. This budget was designed to enhance the spiritual growth of the congregation as well as to grow

(continued next page ...)

the size of the congregation in accordance with our mission statement, "Growing into Jesus and Reaching out with Love". We still need to close the gap; can't continue to live off previous savings. We all need to pray for a balanced budget.

At the conclusion of Ernie's report, Father Todd announced that Ernie would not be able to continue as our Treasurer. The entire congregation stood and thanked Ernie for all his years of tireless service in this very demanding role. A copy of the full Treasurer's report was included in the 2013 Annual Meeting Packet.

**Rector's Warden, Tim Kimes:**

Tim thanked Ernie and the Vestry for their service over the past year(s). After summarizing St. Mary's new and on-going services and ministries, he outlined a simple plan to reduce expenses in 2013: (1) Volunteer to help, (2) Pray about your financial commitment, and (3) Help us grow our parish. A full copy of the Rector's Warden's report was included in the 2013 Annual Meeting Packet.

**Rector, Father Todd:**

Father Todd thanked Father Koz, Father Steve, all of St. Mary's staff, volunteers, new additions, and the congregation for their help and support in 2012. In particular, Father is grateful to his wife, Darla, for following Abraham's example in leaving Philadelphia behind and coming to Florida. He reminded us that while the 2013 budget is a challenge, it represents a faith in our future. The Rector's full report was included in the 2013 Annual Meeting Packet.

vii. Father Todd Opened the floor for questions

Q: Is there a portion of the congregation that is not pledging?

A: Approximately 40% give via plate rather than pledge.

Q: What is the size of our congregation?

A: 570 Families, or approximately 1300-1400 members

Q: Is there a mechanism for any increases in salary to the staff?

A: If we meet our budget goals, this can be accomplished.

Q: What is the role of the Heritage Society?

A: The Heritage Society consists of those members who want to keep St. Mary's going after they have gone.

Reminders and Announcements

1) When inviting people to join us, remember they may be hesitant if they feel they can't contribute financially. Bring them where they will feel most comfortable, e.g. Tuesday Healing Service.

2) Barry Marsh, Communications - Remember when our lord Jesus had a hungry congregation of over 5000? And what did he have to feed them? Five loaves. But at the end there were over 12 baskets of leftovers. By working together, we can do the same!

**ix. Adjournment** - The congregation joined in singing "Praise God from whom all blessings flow", and being no more questions or announcements, a motion was made to adjourn the meeting at 11:35 AM.

Trina Perna,  
Clerk

# St. Mary's Episcopal Church

## Annual Report for 2013

### Contents

Report from the Rector

Report from the Assistant Rector

Report from the Rector's Warden

Report from the People's Warden

Report from the Treasurer

Report from the Parish Administrator

Parish Administrator's Facilities Report

Report from the Children's Ministry Director

Report from the Youth Ministry Director

Report from the Director of Music Ministry

Report from the Praise Band Director

Report from the Outreach Committee

# Report from the Rector

## The Rev. Dr. Todd Cederberg



Once again I am amazed by the goodness and blessing that God has shown us this past year. God has touched many through our worship and deepening community, and lives are being shaped more and more by the presence of Christ. It leaves us wanting more of what we have tasted.

Worship attendance for this past year was up 4 1/2%, which was on top of 11% growth the year before. Our Sunday School program saw an increase of 10%, up from 45 children registered last year, and our Vacation Bible School set another attendance record. Our Youth program is growing, with 14 teens attending each week, and the experience of their first significant mission trip to Tennessee. Our Life Groups continue to grow with the birth of a new group meeting in Port St. Lucie. Our music program this past year flourished. The choir continues to outdo itself, and this past year launched the most ambitious music series ever, all of which was self-funded. Again, clearly the word for this year is GROWTH!

At this point I have to acknowledge and thank all of the staff and vestry who have made this past year such a joy for me here at St. Mary's. It is always a bitter-sweet time of year as we say good-bye to vestry members who are rotating off. Anne Mack, Suzanne Pearson, Susan Murphy, and Tom Gilson, have all been a tremendous encouragement to me, and hardworking servants on behalf of St. Mary's. I especially have to thank Tim Kimes, who has put up with me for the past 3 years as the Rector's Warden. Little did he know what he was getting into!

As we look forward there are some challenges that we need to be very aware of. This year we have said goodbye to the Kozlowski family. Fr. Koz was with us 2 1/2 years, and put a significant stamp on our life together. That is especially true of the community that has formed so well at the Contemporary Service. I have been very grateful for the presence of the Kozlowski family, and for the service of Fr. Koz.

Out of optimism for what the year would hold last year the Finance Committee and Vestry adopted a budget that was in deficit by \$123,000. We knew that, and we presented that to you at the Annual Meeting.

As we end the year 2013, we have experienced a consolidated cash deficit of \$88,000. So, while we somewhat closed the gap, we did not eliminate it. The reality is that the time of our ability to embrace deficit budgets has come to an end. And, the fact that we do not currently have a second full-time priest in place causes us to pause to reflect on the best way forward.

The Finance Committee has recommended, the Vestry has passed, and I wholly support, a balanced budget for the year 2014, and a commitment for a balanced budget out into the future. We simply now must live within the limits that you, the congregation, set for us. You can see Tim Kimes's and Charlie Lippincott's reports for details of the implications of those reductions.

While those reductions will involve virtually every area of our ministry together, the one that particularly stands out is the postponement of the hiring of a second full-time priest. That difficult decision, in my mind, would

(continued next page ...)

certainly alter the shape of ministry here at St. Mary's as we have experienced it in the past. If such a decision needed to be made, it would be made with an eye toward paving the way toward a bright and growing tomorrow.

Your leadership felt it critical to communicate this reality to you, the congregation. We are your leadership. We exist to serve you, and to work to expand the ministry that God has for us in this place. The question is what the future will look like, and what decisions we should make now in order to guarantee the best possible tomorrow? That is the challenge of the moment!

What will be our response? Your leadership felt it important to inform you at this Annual Meeting, and to give you an opportunity to respond. You will shortly be receiving in the mail letters from me and from Charlie Lippincott summarizing this quandary. There will also be a pledge card included, which will give you the opportunity to respond with an additional pledge to allow us to move forward with the hiring of a new priest, and/or lessening the reductions that are currently scheduled to take place. Your new vestry then, meeting in February, will have the opportunity to adjust the budget in a way that makes sense given your additional support.

St. Mary's is a great place. God has done so much to bless and enrich our lives. So the future is bright. We don't have to look at our bank balance to know if God loves us, or to ask if we should be involved in serving others. Rather, we press on with everything we have to be responsible servants of his great and glorious kingdom. It is a pleasure to give and to serve, and to see the lives of people changed by God's love.

#### **A Thank You to our Current Vestry**

Tim Kimes, *Rector's Warden*  
Kasia D'Auria, *People's Warden*  
Tom Gilson, *Pledge*  
Susan Murphy, *Worship*  
Suzanne Pearson, *Small Groups*  
Barry Marsh, *Communications*  
Dee Dee Nice, *Caring Ministries*  
Rose Schneider, *Youth*  
Anne Mack, *Stewardship*  
Tom Morris, *Christian Education*  
Peter Pignataro, *Mission and Outreach*  
Harriet Stone, *New Members*  
Trina Perna, *Clerk*  
David Earle, *Chancellor*  
Charles Lippincott, *Treasurer*

# Report from the Rector's Warden

## Tim Kimes

Certainly over the last three years near Herculean efforts have been put forth by Ernie and now Charlie (plus the tireless effort of Tom Gilson in Stewardship campaigns as well as the Finance Committee), to help us understand and communicate the financial needs of the parish. We have prayed a lot about the budget; we have talked about the budget; we have asked and asked again several years in a row. Now we find ourselves in a position that we must present difficult information and pray again, talk again, and ask again.



We return to the meaning of **Stewardship**:

**We are given Spiritual Gifts.** These are bestowed upon us by God and are to be used in the glorification of God. The Ministries of St. Mary's have fed the hungry, clothed the "naked", supported the troubled, and assisted those who need a helping hand. We should be very proud (though not prideful) of all that St. Mary's does for this community. These Ministries must continue. The willingness of this parish to support these Ministries is evident but there is little, if any, "extra" residing in the budgetary line items;

**We Serve God.** We have not been static in our service. We have a dynamic parish with dedicated and creative staff and parishioners. The Spiritual Gifts we are given are useless if we are not putting them into action in our daily life. Your role as leaders of the parish does not put you over any single individual but it does confer upon you additional responsibility to guide and educate other parishioners in furthering St. Mary's Ministries. We must continue to educate each person in the pew next to us as to the significance of Stewardship in a Christian life and life at St. Mary's;

**We Give of Ourselves.** It is not "how much" is given but that it is given wholly. I may feel as if my dollars may be stretched to the "max", but my gift makes me richer because I have given cheerfully and to what is a greater purpose. The amount I give is not important if I have an understanding of how my gift of time and energy may also be put to use in furthering the Ministries of St. Mary's. More will be asked of each of us in the coming year. It is not just the "treasure" we seek but the gift of time and effort. This may be the greatest challenge to all the members of St. Mary's and to the Vestry. This is not an enviable challenge we face for it is substantial.

For three years I have been privileged to serve on the Vestry of St. Mary's. I have met wonderful people who are so open in their love of Christ and of St. Mary's that I realize how far I have to go in my personal journey. I am amazed by all that you do and by what you have accomplished. The "metrics" of this parish are remarkable – an 11% growth in attendance when many main stream churches and denominations struggle. We have a budget that has been supported (almost completely) and is focused on what we *do* as a parish as opposed to what *prominence* the parish has in the community. And, we have leadership that is unsurpassed in the Diocese! Thank you for giving me the opportunity to work with you and to serve with you. St. Mary's presence has been felt in this community for over 100 years. Generations have considered this their spiritual home – their Bethel. We are charged to insure the continuance of this place of worship and its Ministries through our good and steady Stewardship, and we will do so!



# Report from the People's Warden

## Kasia D'Auria



Hello sweet friends!

What a blessing it has been to spend another year with you as your People's Warden. It has been another year filled with loving, learning, celebrating, suffering, and growing with our Jesus. We come to St. Mary's as brothers and sisters, searching for a way to do life together, and sometimes we wonder if we are doing it right. This is the question that we are currently wrestling with as a community.

During the past several years, we have been able to accomplish so much despite budget shortfalls. We have experienced a significant growth sprout, added programs such as Alpha and Financial Peace, traveled out of the state to share God's love, hosted baby showers and fashion shows, planted gardens and cleaned up entire campuses, fed the hungry through Mary's Kitchen and Backpack Buddies. I could go on and on about who, what and how we are impacting our neighbors and striving to be more Christ like.

At a certain point, however, we also have to acknowledge that all of these wonderful things come with a price tag. A price tag that we have not been able to afford most years. Because of generous donors in the past, we have been able to sustain and make up the difference in our financial short falls but we won't be able to for very long.

And this is where we wrestle.

We wrestle as Jacob wrestled. Yes, we have been able to do so much for so long but to always look at only our accomplishments would mean that we are no longer depending on God's grace to meet us where we are but depending our works to sustain us. I, along with the rest of the Vestry stand with our faithful Rector, in believing that it is time that St. Mary's confronts our budget weakness and give them over to God. Jacob wrestled all night. It was only when he ceased struggling that he received the blessing. We have wrestled for several years now attempting to balance our budget. For this upcoming year we have made a commitment to cease the struggle and live within God's blessings to us, trusting that He will continue to meet right where we are.

C.S. Lewis reminds us: "We all want progress, but if you're on the wrong road, progress means doing an about-turn and walking back to the right road; in that case, the man who turns back the soonest is the most progressive." We all want St. Mary's to grow, prosper and progress. In order to do that we can not continue on the same road we have been walking.

This year, we are turning around. We are focusing on the gifts that we do have; our time, resources, energy, space, talent, you name it and trusting that it is enough to further His Kingdom here. The truth is God always gives us enough. At times it more than enough and other times it is just enough to keep us clinging to Him.

Whatever our road leads us; our God is the God who provides!

# Report from the Treasurer

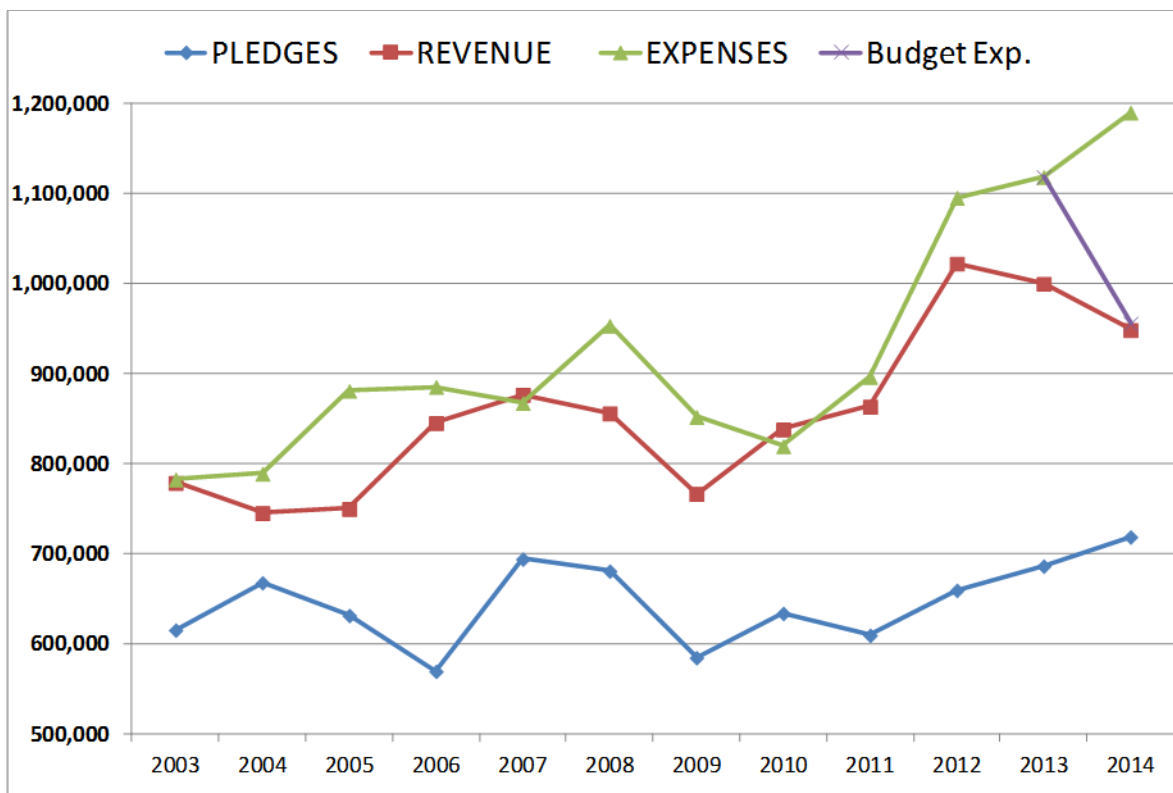
## Charles Lippincott



The year 2013 started with an anticipated operating budget deficit of \$141K, based on St. Mary's as we would like to know it, and with a hope that additional funding would be found to balance the budget. Indeed extra donations of about \$69K were raised, but expenses rose as well, such that the year's deficit was less than projected. On a consolidated cash basis it is \$88K, which takes into account investment income.

Analysis of the church's net free cash position showed that it has fallen over the years to a level equivalent to four months of operating expenses. Also, we have a seasonal swing every year whereby revenues decline in the summer while expenditures rise to cover repair type work. That swing was over \$150K this past summer. We really don't have excess cash assets! The story of deficits at St. Mary's is not new, but the time for change to a balanced budget has finally come.

In the following chart over the past decade expenses overpower revenue almost every year, and the gap between total revenue and pledges is wide and highly variable, making planning difficult. In this chart 2014 the green line shows 2014 expenses on St. Mary's as we would like to know it basis, and the purple segment as we are budgeting expenses to match revenues for a balanced budget.



Our initial 2014 draft expense budget was quite close to 2013's, consistent with similar level of activity, other than staffing costs which needed to be raised. The extra donations raised early last year are clearly not reliable enough to count on for 2014, and pledges have not grown enough to fill the gap. Therefore action to balance the budget was imperative, which was agreed by the Finance Committee, Vestry, Rector and the Treasurer after very careful review. It was also agreed to allow the Rector to adjust the allocation of cuts while keeping the budget balanced.

(continued next page ...)

The 2014 expense reductions needed include not replacing our Assistant Rector, but also reducing costs in other areas. Replacing the Assistant Rector this year may be possible, if sufficient additional pledging is soon found to cover not only cover the current year's cost (a half year \$50K), but we also need a strong indication of a full year's support for the position in 2015. I pray that such support will be forthcoming.

The following shows the budget up for Vestry approval January 21st, and the changes from the December draft representing *St. Mary's as we would like to know it*.

<b>Operating Fund 2014 Budget</b>		
<b>Units: K\$</b>	<b>Vestry Approved</b>	<b>DRAFT</b>
	<b>Jan. 21</b>	<b>Dec.</b>
<b>REVENUES</b>		
Offerings	872.4	872.4
Other Revenues	76.4	76.4
Programs & PC Use	90.3	86.1
<b>TOTAL REVENUES</b>	<b>\$1,039.1</b>	<b>\$1,034.9</b>
<b>EXPENSES</b>		
Diocesan Assessment	143.8	143.8
Clergy & Staff	501.0	627.0
Programs	98.8	127.4
Administration & Other	73.4	87.9
Buildings, Utilities, PC Use Exp.	193.9	196.9
Repairs & Improvements	19.5	57.5
<b>TOTAL EXPENSES</b>	<b>\$1,030.4</b>	<b>\$1,240.5</b>
<b>TOTAL REVENUE</b>	<b>\$1,039.1</b>	<b>\$1,034.9</b>
<b>TOTAL SURPLUS /(SHORTFALL)</b>	<b>\$8.7</b>	<b>(\$205.6)</b>

In addition to the operating budget there is one item of \$28K in the capital budget for repaving of roughly half of the parking area between Smith Hall and the church building. This was necessitated premature failure of the special concrete material, which is mandated by building code. Many alternative materials were explored before the decision was made to do the work.

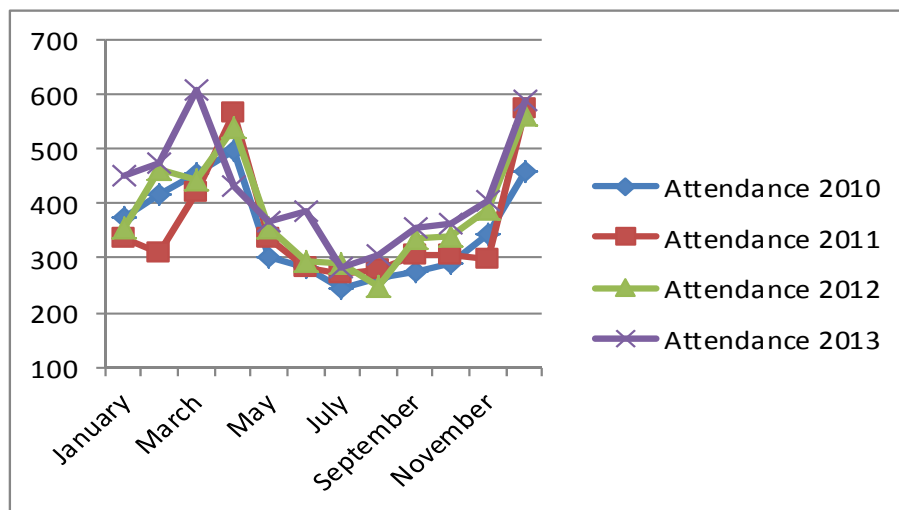
# Report from the Parish Administrator

## Melissa Lewis



### Attendance:

The total worship attendance in 2013 was 20,649. This is an increase of 4.5% over 2012!



### Social Media:

In 2013, we built a new and improved website ([www.stmarys-stuart.org](http://www.stmarys-stuart.org)). In the past month we have had 1,371 visitors and 4,253 page views. Thank you for your interest and keep checking back as more information is added!

St. Mary's is also active on YouTube ([www.youtube.com/stmarysstuart](http://www.youtube.com/stmarysstuart)). What do we post on Youtube? You can find the 9:00 a.m. Contemporary and Traditional sermons, plus other videos. To date St. Mary's videos have been viewed 14,084 and we have 56 subscribers. Unable to attend Sunday services due to travel or just not feeling well? Join all the other viewers and find out just what is happening at St. Mary's any given Sunday.

Have you visited our Facebook page ([www.facebook.com/stmarys.stuart](http://www.facebook.com/stmarys.stuart))? A HUGE thank you to Zelia Paul who continues to keep St. Mary's Facebook active with daily posts! "Like us" on Facebook to keep up with the latest news, readings of the day and other information.

What does all of this mean? We are reaching out to the community using today's technology. The more visits to our website, the more videos viewed on YouTube and the more "likes" on Facebook, the more likely we are to draw in visitors who then become new members!

### Volunteers:

A very BIG thank you to all of our wonderful office volunteers that help the office staff answer the phone, fold, stuff, and label. Those comfortable with a computer also help input data, scan, print, etc. If you have a little extra time in 2014, we are looking for volunteers to help fill the gap!

# Parish Administrator's Facilities Report

## **The Facilities Committee:**

The team completed all our projects and tackled several emergency situations including arranging for repairs to half of the church parking lot. We were able to implement a plan to re-arrange the church offices including moving the choir to a much larger, usable room. Youth Room 2 and 3 received a much needed update with new carpet and paint, the Nursery Building interior received a new coat of paint and Meeting Rooms 2 and 3 have new carpet.

We have also been hard at work reclaiming space formerly part of Lucido & Associates. Watch for the upcoming grand opening of these new meeting rooms.

We have presented the recommended 2014 budget to the Finance Committee.

We give thanks for the work of Debbie Flerx (facilities manager), Bob Pearson (head of the facilities committee), and all other members of the committee. We also give thanks for our amazing sextons: Allen Gardner, Chad Jarrell and George Wright!

## **Pittenger Center, Smith Hall, Courtyard & Other Meeting Rooms:**

In 2013, the Pittenger Center hosted 60 outside events with a gross income of \$35,725.00, Smith Hall hosted 14 outside events for a gross income of \$1,825.00 and the church and courtyard hosted 6 non-parishioner weddings for a gross income of \$7,350.00. In 2014, we have already booked 20 events in the Pittenger Center with a gross income of \$8,675.00.

In 2013, we had many outside groups using Smith Hall, the Meeting Rooms, and Youth Building on a donation only basis including AA, NA, OA, AlAnon, Men's Bible Study, Lunch & Learn, NAMI, etc. We received an average of \$450 per month in donations from these groups. In 2014, we continue to make Smith Hall, the Courtyard and other spaces available for outside use.

# Report from the Children's Ministry Director

## Kelly Garner



The Christian Education ministry at St. Mary's continues to thrive. We have close to 50 children registered for Sunday School classes this year, with about 35 attending each week. In 2013 we added 2 classes to our offering, bringing our total to 4 classes each Sunday. We offer a Kindergarten-2<sup>nd</sup> grade class, a 3<sup>rd</sup> and 4<sup>th</sup> grade class, and our new 5<sup>th</sup>-7<sup>th</sup> grade class. We also began a class called "preschool praise" - a play and music based class for our smallest parishioners (ages 2-4).

In 2013 we used the "Big Bible Challenge" for our curriculum. This program is the children's version of the E-100 curriculum used by the whole parish. We learned and discussed 20 of the most important stories in the bible, and then each student got a take-home sheet with 4 other stories to learn during the week.

In 2013, we continued to develop our "Children's Church" program, where once a month the children have their own "service" in the traditional church. This takes the place of regular Sunday School. We explored many different themes this year, included several of the most important "virtues" Jesus expects from us. During Children's church, we sing a hymn, practice making the sign of the cross, do some read and response, read what the bible says about our topic, and then have a lesson. This is a great "touch & feel" experience for the children where they can get a feel for the traditional church and understand our Episcopal traditions.

We spent 3 weeks in April and May of 2013 on our "Come To the Table - A Child's Guide to the Holy Eucharist" unit. I developed this unit by taking the "best" of several curriculums offered across many faiths. It was taught in our K-2, and 3-5 class. It included a lot of "showing and telling and touching." Fr. Koz explained how he blesses the bread, we made our own chalices, and the Altar Guild shared with us how they set up for the Eucharist. This year we asked all the children to make sure they knew The Lord's Prayer, and to recite it and understand it each class. This is a WONDERFUL unit for our children. Since all baptized Christians are welcome to "Come to the Table," our children sometimes don't know what this most important part of our service is all about. It concludes with the children showing what they have learned in front of the CFW congregation. They came forward and said The Lord's Prayer and then received communion (some for the first time).

Our VBS, "Everywhere Fun Fair" was a huge success. We had 130 children attend and more than 35 volunteers. More than 70% of the attendees do not attend St. Mary's, and half of those do not attend church regularly. It was so wonderful to share the love of Jesus with these "unchurched." We have stayed in touch with these families throughout the year through email. They are regularly invited to family activities, and it is wonderful to see many attend. This was the smoothest VBS in recent years with different "leaders" for each rotation. We will have big shoes to fill in our bible center this year with the loss of Fr. Koz, but I am confident one of our parishioners will step up and lead this very important center.

Our "Mission 345" program is in its second year and absolutely thriving.. This is a group comprised of 3<sup>rd</sup>-5<sup>th</sup>

(continued next page ...)

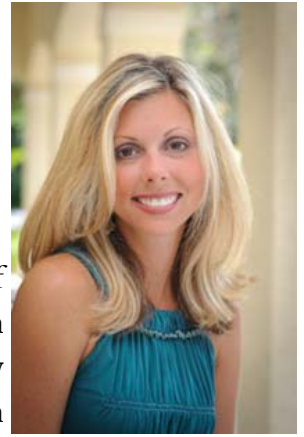
graders that meets one Sunday night a month. We have food, fun, fellowship and service incorporated into the night. We overlap with the "ROCK" for an hour. It's a great time expose the younger kids to Youth Group and develop mentoring relationships. We have more than 20 kids attending. This semester we created boxes for Operation Christmas Child and went to the movies!

Our Family & Youth events continue to be well received, and create community. We had one event scheduled each month in 2013, and will continue in 2014. These are a mix of things, from pizza on the playground after the services, to a family field day, where we played all kinds of fun games at the park. 2014 began with making Faith Chests for our baptism mementos, and will include a renewal of marriage vows and babysitting on Valentine's day.

2014 looks to be a year of challenges, but we are ready to take them on! Thank you again to all who contribute to the Christian Education Ministry, and we hope to see some fresh new faces this year as well!

# Report from the Youth Ministry Director

## Alexis Stuckey



2013 was a HUGE year for the ROCK youth group at St. Mary's! The major focus of study for our group this year has been on leadership. What does it mean to be a leader? In our schools, homes, churches and community. The world offers us a VERY different view of leadership than the Bible. So this year, Alexis developed a curriculum mainly based on John Maxwell's *21 Indispensable Laws of Leadership*, taking those qualities and explaining them to the students from God's view.

In 2013 our high school youth participated in a summer mission trip to Sevierville, TN. The group included 2 parent volunteers along with Alexis and Father Koz. The outpour of love, support, generous financial contributions and prayer from our parish was truly overwhelming. The students attending this trip worked an entire week to re-roof and paint the home of a woman in serious need. The students also planted a memorial garden at her home in loving memory of her daughter whom she lost last year when she took her life. The value this brought to our group and ways it brought them together are hard to even describe in words.

The ROCK youth students assisted with VBS in August when over 120 children from the church and community came for our week-long adventure at the Everywhere Fun Fair! Youth students are a crucial part of making this program successful. Middle and high school students are also required to have volunteer hours in their community in order to graduate and participate in certain school-based and academic programs and VBS is a great way to obtain those hours along with learning important leadership skills.

Additionally this fall, the ROCK students used money they were given in the form of a grant from the Outreach team to plant a vegetable garden in "earthboxes" at our partner elementary school JD Parker right down the street. The project was a huge success and featured in the Stuart news. The group was also nominated for an Environmental Stewardship Award through the Keep Martin Beautiful Organization in Martin County.

Big goals this year- Mission trip success as we head out of state with our high schoolers again! Please pray for us. Prayerfully, continue to seek a part time youth assistant to help Alexis Sunday evenings. This fall, we will need to separate middle and high school students as our numbers continue to grow. The average attendance for Sunday evening studies on non-event weeks was 14 students per week.



# Report from the Director of Music Ministry

## Joanne Nelson



I would like to begin with a quotation from Katherine Graham, “To love what you do and feel that it matters ... how could anything be more fun?”

A picture is worth a thousand words. Let me paint the magic of this beautiful year for you with a few sketches.

The most stunning visual enhancement and musical improvement to our traditional worship service has been the addition of a gorgeous Yamaha piano. Generously donated to the sanctuary by Susan and Dennis Murphy, this beautiful instrument has opened the door to attracting top flight singers and musicians and allowed us to expand our music repertoire to include Gospel and traditional standards.

New people are joining the choir, and the congregation is thrilled by the young voices of our soloists and the spirited, prayerful, fabulous ensemble of the whole choir. St. Mary’s is blessed. The choir has received rave reviews and notes of “... Spectacular ... jaw-dropping ...” for their singing during the Patriotic concert in November, Advent Evensong, and Christmas Eve. We are looking forward to presenting on Good Friday, April 18<sup>th</sup> at 7pm, a concert with Dr. Claudio Jaffe, cellist, as guest conductor, and guest bass, Dr. Lloyd Mims, Dean of the School of Music and Fine Arts, Palm Beach Atlantic University. Music will include a Bach Chorale from the St. John Passion, three of the seven “Last Words of Christ” by Dubois, and selections from the Requiem by Mozart. This emotional music will support our solemn worship in a most memorable evening. Dubois even paints a storm the children will love to hear! This is also a child-friendly 45 minute concert.

We hope many people will also join us in St Mary’s Sanctuary for the our final concert of this season on February 9<sup>th</sup> at 5pm featuring the talents of two internationally acclaimed musicians, violinist Helen Chang, and Mezzo Soprano Joanna Porackova.

Socrates wrote, “Musical training is a more potent instrument than any other, because rhythm and harmony find their way into the inward places of the soul, on which they mightily fasten, imparting grace”.

The next close-up picture I want to present involves interaction with our children. Including them in our musical programs has been an enriching source of joy for everyone. They were featured in our December Community Carol Sing, and stole the show at the new Christmas Eve service at 4pm. Most recently, our Children’s Opera Arias Program highlighted our young artist singer, Addison McGee, singing “Pie Jesu” in her lovely gown. After the concert, several children expressed interest in preparing a Liturgical dance for Easter Sunday.

I want to reach out and thank the clergy for their wonderful support of the traditional music program here at St. Mary’s. Another special word of thanks comes from my heart. I am honored to thank all the generous donors who have helped us expand the Music Series this year! Their generosity has been a huge part of our success!!! I believe the Music Series has shed a positive light on our church, and brought people from Martin, Palm Beach and St Lucie Counties to visit us.

Thanks to vision and careful planning, we anticipate this program will end the year with a positive balance. Generous donations from our sponsors helped us achieve this goal and thanks must be noted to Len and Betty Nichols, three Angels, and our corporate sponsors, Waterpointe Realty, Seacoast Bank ,and Indian River Travel.

A special point of appreciation for the gracious hands and hearts of the three people on the Music Committee, John Burson, Tim Kimes, and Susan Murphy, for their guidance and mentorship as I integrate into this role.

# Report from the Praise Band Director

Erich Yesse



Praise. In its simplest form the act of praise is to make a positive statement. Every Sunday during our Contemporary Family Worship service our musicians pray for the Holy Spirit to move through our voices and instruments to reach the souls of our church family. We humbly seek to stir hearts and open minds. Our mission is to bring together each worshipper's private expressions of thanksgiving to publically and passionately fill the Pittenger Center with unmistakable praise. Praising! Celebrating! Proclaiming! Hailing! Lauding! Exalting our God! Each of the musicians who make up our praise band, "Hail Mary," is on a personal faith journey. We humbly thank our congregation for your voices, your support, and the opportunity to serve by making music with you.

Over the past year our praise band developed into a cohesive group with a repertoire of over 60 well known praise songs. Each musician is uniquely talented, and we are blessed with the blend of contributions musically and personally. The dedication and time for this work far exceeds the weekly band practice, preparatory run through, and worship service. My primary focus in this first year as Director was to dramatically improve the quality of our sound by assembling the musicians who comprise "Hail Mary."

The progress we have made in quality of our music could not have been realized without a revitalized commitment from St. Mary's clergy and vestry. We value the guidance of Father Todd and appreciate the trust placed in us. We remain careful stewards of essential funds necessary to promote the growth of our parish and the quality of our worship service. In addition to our musicians, technology and equipment are critical investments. We do face challenges in a multipurpose space with logistics and acoustics. The partnership and assistance of all St. Mary's staff and volunteers continues to be a blessing.

Father Koz shared in a vision to grow with Christ through music both inside and outside St. Mary's campus. This shared vision inspired my wife, vocalist Susanne Yesse, to begin working closely with Father Koz to create a true worship team effort. Together we carefully prepare each of Sunday's five worship songs to reflect the message of our Episcopal liturgy and the meditations of the Homily. Father Koz's faith in our abilities to assist and grow as worship leaders continues to motivate us during the search for a new Assistant Rector dedicated to Contemporary Family Worship.

We encourage parishioners to listen to contemporary Christian music daily for support, encouragement, and healing. We value input and encourage you to explore what songs touch your hearts. We reflect on the struggles and celebrations of our congregation to bring music with a meaningful message each Sunday morning. This music has transformed our lives. We pray daily for God's will to be done. We lift our music up to His glory, and thank God for His blessings.

# Report from the Outreach Committee

## **Overview**

The St. Mary's Outreach Committee includes Tami Larkan, Duke Templeton, Peter and Kathy Pignataro, Jim and Jane Anthony, Amber Resetar, Mark and Beth Ferrara and Bryan Garner. We meet monthly to organize volunteer activities, events and fundraisers that advance our core charitable commitments and further the mission of St. Mary's, "Growing into Jesus, Reaching out with Love."

## **Mary's Shelter**

Our partnership with Mary's Shelter, the local transitional home for expectant mothers, kicked off in 2013 and has grown significantly. For much of the spring and summer the Outreach Committee provided rides to the mothers who wished to attend church at St. Mary's. We organized a baby shower to provide them with much-needed maternity supplies. We have learned that the shelter's transportation needs go beyond what our volunteers can provide. In 2014, with the help of a Heritage Fund grant, we will work to secure a van for the Shelter to help mothers who need transportation to doctor's appointments, volunteer activities and job interviews.

## **Samaritan Center Scholarship**

For the past two years, we have sponsored a scholarship which has helped support one of the developmentally and/or behaviorally challenged boys at the Samaritan Center for Boys. In 2014, we plan to continue the scholarship, which is funded by the Agnes Weeks Scholarship Fund. In addition to the scholarship, under the leadership of Darla Cederberg, we launched our first "Day of Giving" which engaged 30 St. Mary's volunteers to clean and improve the Samaritan campus. And we have begun a series of parenting classes at St. Mary's, featuring staff from Samaritan.

## **Youth Challenge Grant**

In 2013, we launched the first Youth Challenge Grant. The idea was to challenge our youth group to come up with an outreach idea that they would administer and that would grow beyond the initial seed money invested. Our youth group found the perfect way to realize this challenge planting a vegetable garden at our partner school – J.D. Parker Elementary. This innovative project will help teach students about agriculture and healthy eating. We will sponsor a new grant in 2014 that will continue to challenge our youth to make positive contributions in our community.

## **Backpack Buddies**

Our Backpack Buddies program has been one of the most well-received outreach programs. Each Friday, we provide a package of healthy, ready-to-eat food items to needy students at J.D. Parker Elementary School, where approximately 80 percent of students qualify for subsidized lunches. This food helps students and their families get by during weekends. Now in its fourth year, the program has expanded from sponsoring 25 students to 65 students. Sponsoring a child costs less than \$5 per week, and it makes a direct impact on the lives of local families. In 2013 we added a "hands on" volunteer activity: sorting and packing food for the program at our partner agency, the Treasure Coast Food Bank. In 2014, we will plan quarterly volunteer trips to the Food Bank so St. Mary's families can share in this effort.

(continued next page ...)

## **Angel Tree**

For the third year, St. Mary's parishioners adopted children from our Backpack Buddies program during Christmas, providing them with a generous bounty of Christmas gifts. For the first time, we hosted a party for the children including cocoa, cookies and a chance to meet Santa. We plan to continue this tradition in 2014.

## **TRUE Fund**

The St. Mary's TRUE Fund (Towards Relief of Unplanned Emergencies) provides emergency grants of up to \$250 to needy individuals and families in our community. Grant requests are screened by local social service agencies, including: the Salvation Army, House of Hope, Helping People Succeed, LAHIA and the Department of Children and Families. Grant monies go toward a variety of requests, including helping families pay bills, make rent payments, buy groceries and maternity supplies, or cover transportation costs so recipients can travel to a job interview or new opportunity. This fund is supported entirely by the generosity of St. Mary's parishioners, with a special collection on the first Sunday of each month - TRUE Fund Sunday.

## **St. Mary's Closet**

Martin County's oldest running thrift shop, located on the St. Mary's campus, has a new name and a new look. St. Mary's Closet has enjoyed revitalization, thanks to its dedicated volunteer staff and an energized marketing effort. The shop's volunteers host regular holiday and seasonal sales events. All proceeds from the shop go directly to a variety of local charities. In March of 2014, St. Mary's Closet will host its second annual fashion show to benefit the Volunteers in Medicine Clinic.

For more information in volunteer and sponsorship opportunities, or if you would like to join the Outreach Committee, contact Bryan Garner at [brykelem@bellsouth.net](mailto:brykelem@bellsouth.net) or 772-463-7257.

# Report from the Reveal Survey Committee

Committee: Alec Connolly, Kasia D'Auria, Denny Hudson, Tom Morris, Peter Pignataro, and Harriet Stone

Four workshops were held to study the Reveal Survey results. Response rate: 189 members took the survey. St Mary's response was above average compared to the other Episcopal churches that took the survey.

Demographics: 80% of our parishioners that took the survey were 50 plus years old, 1% were between the ages of 19-29. Diversity: 1% were non-white or Hispanic, 21% had children under the age of 18 at home. Fifty-two percent (52%) of responders have been at St Mary's more than 10 years.

WHERE ARE WE? St Mary's is above average in many areas. We are a very happy and satisfied congregation. We scored high on "provides worship that is challenging and thought provoking." Our congregation is very supportive of our leadership. We scored low on "empowers me to go out on my own to make a significant impact on the lives of others." We also scored low on how we feel about the importance of tithing, and are stalled in growing. We are happy just the way we are. It became clear that while people are satisfied with the key aspects of the life of St Mary's, we are content with a low level of spiritual vitality indicated in the vitality scores. Rev. Clarence Landon co-author of the Reveal Survey told the committee this is typical for the Episcopal churches they have worked with. The results call us to examine where we are and ask ourselves if we want to stay where we are or GO DEEPER.

The survey shows that the leadership of St Mary's can put forward a challenging vision and they believe our congregation will be willing to hear it and take it seriously.

St Mary's can be a beacon of light to other Episcopal churches. We are a strong, giving community.

Respectfully submitted,  
Harriet Stone, Facilitator

## ACTION STEPS SUGGESTED FROM THE RESULTS OF REVEAL SURVEY

1. Make better use of outreach activities to introduce others to St Mary's
2. Actively engage parishioners in church ministries
3. Encourage parishioners to talk about St Mary's
4. Empower members to take on leadership roles
5. Develop strategies to make St Mary's attractive to a more diverse population
6. Bible studies at night

(continued next page ...)

7. Offer online access to events live
8. Expose group activities to general congregation
9. Expand Alpha and Life Groups
10. Offer facility or behind scenes tour of our campus.
11. Increase awareness of St Mary's on/off campus events
12. Guest speakers leading to Bible discussions
13. Offer off-site services to greater audience
14. Generate holiday services at rehab/assisted living
15. Reach out to church partners in our community
16. St Mary's mission trip to St Mary's, repairs
17. Find ways to improve low scores in spiritual beliefs and attitudes.
18. Attract younger people
19. Make church schedule and literature available at Mary's Kitchen, Mary's Closet, Smith Hall, and at any out-reach we do.
20. Campaign- IT'S OK TO TALK ABOUT ST MARY'S AND OUR FAITH

# Report from the Parish Health and Wellness Ministry

The Health and Wellness Ministry began at a meeting of interested parties in March 2012. The group developed a mission statement which states: **Guided by the vision which is Gospel centered, the Health and Wellness Ministry believes that the spiritual, physical, mental and emotional well-being of the parish and community is vital to our faith and is the foundation and strength of St. Mary's Church.**

Programs that took place during 2013 included:

- Five Wishes Program
- Fall Prevention Program
- The Emotional and Social Aspects of Illness
- Waist Watcher Program
- Assisted several homebound parishioners

Shelly Taft assisted us in developing two programs for Hospital Visitation Ministry which were an Introduction to Hospital Visits and a Guide to Hospital Visits. These will be invaluable in recruiting and training parishioners who wish to assist in visiting people in hospitals and nursing homes.

This ministry is composed by the following groups:

- Hospital Visitation - Mary Shaw
- Nursing Home and Home Visits - Eva Lippincott
- Eucharistic Visitors - Peter Pignataro
- Health and Well Ministry - Eleanor Hanley
- Healing Ministry - Fr. Stephen Fregeau

If you are interested in joining any of these ministries, please call the contact person.

Programs planned for 2014 include:

- Hospice Information Program
- The Daniel Plan Program
- Diabetes Information Program
- Alzheimer Information Program
- An approach for developing a Healthy Lifestyle

We are looking into several other programs to assist our ministry: Stephens Ministry, Good Samaritan Ministry and the Order of St. Luke Healing Ministry.

I would like to thank our Vestry Representative Dee Dee Nice for all her assistance and guidance for the past two years.

Respectfully Submitted,

Fr. Steve Fregeau  
Associate for Pastoral Care

# Welcome New Members!

The following persons joined or re-joined the St. Mary's community in 2012. If you joined in 2013 but your name is not listed here, please contact us so we can correct our mistake and properly welcome you!

Karlyn Anders	Carolyn Jensen	Stephanie Shaw
Bryan Anders	Zachary Johnson	Douglas Shaw
Christopher Anderson	Catherine Johnson	Debra Simons
Ashley Anderson	Melissa Jones	Frank Smith
Jacob Anderson	Hannah Jones	Melanie Smith
Meghan Barnett	Aidan Jones	Luciana Smith
Julie Bennett	John Kelley	Rocco Smith
Michael Berg	Jessica Kelley	Paolo Smith
Erin Berg	Charlotte Kelley	James Stuckey
Kendra Brown	Ashlyn Kelley	Hugo Ucelo
Joshua Burdick	George Lambros	Carmen Ucelo
Patricia Camper	Leslie Lambros	Michelle Ucelo
Vivian Carlo	Paula Lewis	Daniel Ucelo
Roger Colon	Charles Lowell	Marie Van Scoy
Sarah Colon	Barbara Lowell	Theodore Vatcher
Savannah Colon	Virgil McCollum	Carol Webb
Christopher Colon	Carolyn McCollum	Melissa Woods
Jeffrey Davis	Scott McNabb	Michael Yocom
Beverly Davis	Heidi McNabb	Cory Zartman
Peter Dayton	Justin McNabb	Olivia Zartman
Eileen Dayton	Asheton McNabb	Wyatt Zartman
David DeHarter	Suzanne Northcutt	
Diane DeHarter	Nicholas Pasken	
Edward Ewing	Stephanie Paul	
Tammy Ewing	David Pennington	
Katherine Fillman	Linda Pennington	
Lucille Gallant	Joyce Poole	
Tricia Gray	Jonathan Prevatte	
Kevin Hawken	Amanda Prevatte	
Georgiana Hawken	Elizabeth Prevatte	
Connor Honea	Gavin Rancour	
Preston Honea	Edward Shaw	



# Candidates for Vestry Election



**TODD BALFOORT:** Todd Balfort moved to Stuart by way of Ft. Lauderdale in June of 2011. He has been married to Michelle for 16 years, and they have three boys, Peyton (10), Emmett (7), and Tucker (4). Todd was baptized & brought up in Ft. Lauderdale Christian Reformed Church where his parents were members for more than 50 years.

Prior to transferring membership to Saint Mary's, he and his family were members of All Saints Episcopal Church in Ft. Lauderdale. Their children attended St. Mark's Episcopal School where he served on the Advancement Board.

Todd has a Master's degree from the University of Florida in Building Construction. He and his wife both own their own firms, Balfort Contracting, and Balfort Architecture.



**PAM LANIER:** Pam is a lifelong Episcopalian; she is the daughter of an Episcopal priest and organist/choir director. She has been a member of St. Mary's since 1996 and is a member of the choir.

Pam is widowed and has three grown children, Ron, Anthony and Christina and two grandsons, Bradley and Evan. She is a registered nurse and has been the Assistant Director of Nurses at Parkway Health and Rehab Center for the past 23 years.



**JIM MENENDEZ:** James W. Menendez has been a Legal Administrator for over 30 years. For the past 22 years he has served as the Legal Administrator for the law firm of Crary-Buchanan in Stuart. Jim is a Past President of the Association of Legal Administrator of Palm Beach County and is also a Certified Legal Manager by the Association of Legal Administrators. Jim is a current member of The Florida Bar Advisory Board for LOMAS and serves on the Statewide Advertising and Solicitation Grievance Committee for The Florida Bar.

Jim is also active in our community as a past Board Member for Treasure Coast Food Bank, Past Committee Member for The United Way, Guardian Ad Litem for the Nineteenth Judicial Circuit of the State of Florida, volunteers as a coach for Martin County Little League and is the current Secretary for the Jensen Beach High School Baseball Boosters organization.

Jim and his three sons Brian, Sean and Wyatt attend the Family Service at St. Mary's. Wyatt and Sean also attend the Youth Group at St. Mary's.

(continued next page ...)



**NICK PASKEN**: Nick Pasken is a native Floridian - born and raised in Miami and graduate of the University of Florida. He currently works for AT&T Network Operations as part of a national staff responsible for coaching and developing managers across multiple organizations. Nick has worked in various management capacities throughout AT&T over the past 9 years, from supervising technicians to budget and material management responsibilities. Nick is engaged to Meghan Barnett and they were happy to make St. Mary's their church home last February. Nick attended Episcopal Men's Cursillo #90 and has been actively engaged with numerous St. Mary's ministries as a Lay Eucharistic Visitor, Ambassador, and helper for Mary's Kitchen. He and Meghan attended Alpha last fall and are thankful for the numerous opportunities St. Mary's provides to grow spiritually and work together to support our local community.



**BETTY PHILLIPS**: Betty Phillips has been a member of St. Mary's since 2002. She was a Vestry member of her first Episcopal Church in 1967 in MA. Since the Faith Alive weekend she has been in Jack Godfrey's group and she also is a member of an On Going Journey group. She is a member of a Life Group and a Cursillo group along with two Bible study groups. She is an usher and a reader at the church.

Betty was a LTjg in the Navy right after college. She was a Top Secret Security Officer in Washington, DC. She attended a Christian College, Gordon, in Wenham, MA. She also got a Certificate of Advanced Study at Harvard in reading. She was a teacher and a principal in public schools in ME and MA, for many years, She was an Assistant Superintendent of Schools in Hanover, NH.

Betty is a member of the Red Cross Disaster Action Team. She lives now with her son in Stuart.



**SUE RIDDELL**: Sue Riddell moved to the Stuart area from Delray Beach in 2000 when she was appointed as Administrator of Palm City Nursing and Rehab Center. She and her husband, Ray joined St. Mary's at that time and have attended services regularly. They have also supported St. Mary's and attended many of their events during that time. Prior to that they were members at St. Paul's Episcopal Church in Delray Beach. While living in Delray Sue was part of the management team of Hospice of Palm Beach County. In addition she was President of the Academy of Hospice Nurses and served on the Board of the Hospice Palliative Nurses Association.

Sue and Ray have been active members of the Alzheimer's Community Care Association have co-chaired their 2011 & 2012 Martin County Fund Raising events. Originally from Michigan, Sue holds a degree in nursing from Eastern Michigan University and a Master of Science Degree from Lynn University in Boca Raton, Florida. Her dedication and background in management and service would be an asset to the St. Mary's vestry.